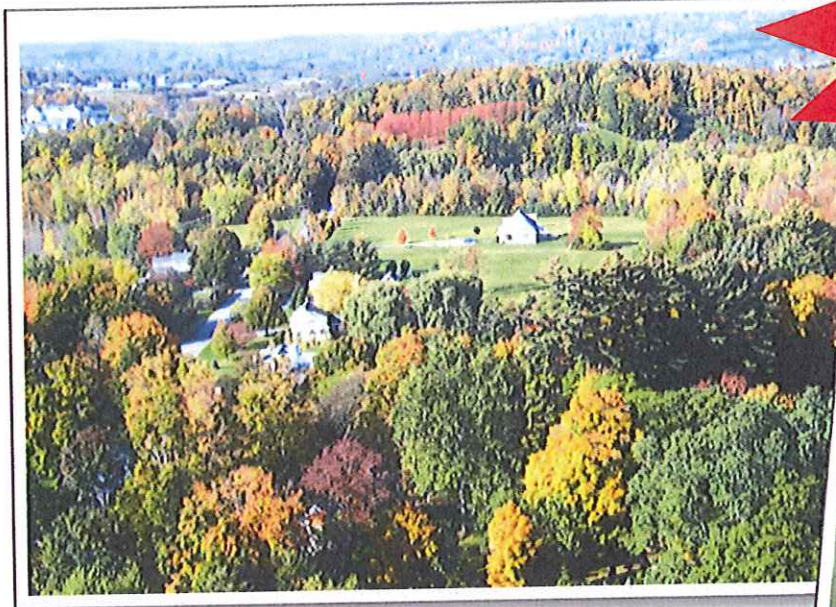


State Farm Employee Activities/Goldtimers

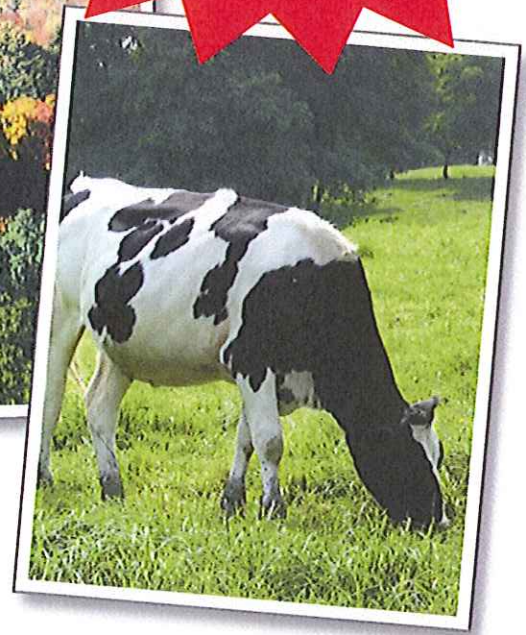
presents...

New England Back Roads

September 28 – October 5, 2012



**BOOK NOW
& SAVE
\$100
Per Person**

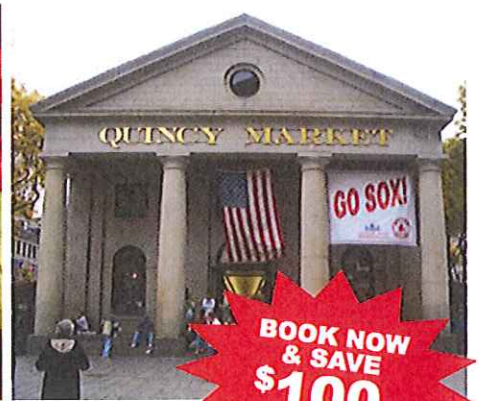


Join us for a
slideshow!
State Farm Beach House
Houghton North
April 10, 2012 at 4:30 pm

8 Days • 10 Meals: 7 Breakfasts • 3 Dinners



COLLETTE
VACATIONS



BOOK NOW & SAVE \$100 Per Person

New England Back Roads

Highlights... Boston • Lincoln • North Conway • Friesian Horse Performance • Vermont Country Store • Hildene • Adams Farm • Molly Stark Trail • Bennington Museum • Apple Orchard Norman Rockwell Museum • Hancock Shaker Village

Book by 5/27/2012: Double \$2,449; Single \$3,149; Triple \$2,419
Double \$2,549; Single \$3,249; Triple \$2,519 if booked after 5/27/2012
Rates are Per Person (see terms)*

Included in Price:

Round Trip transfers from Bloomington, Il to Chicago O'Hare, Round Trip Air from O'Hare Intl Airport, Air Taxes and Fees/Surcharges of \$50 (subject to increase until paid in full), Hotel Transfers, tour as outlined in the itinerary

Not included in price: Cancellation Waiver and Insurance of \$165 per person

Day 1: Friday, September 28, 2012

Boston Area, Massachusetts - Tour Begins

From country stores to covered bridges and remarkable mountains, welcome to New England's back roads. Collette is pleased to offer this exciting adventure which showcases the best of New England.

Day 2: Saturday, September 29, 2012

Boston - Lincoln, New Hampshire

A sightseeing tour of Boston features the Old South Meeting House, gathering place of patriots; the Public Gardens, the Old North Church, Beacon Hill and the U.S.S. Constitution, the oldest commissioned warship afloat in the world. Later, stop at the famed Faneuil Hall marketplace with its eclectic and tempting assortment of food and shops before departing for New Hampshire. En route, enjoy spectacular views of the tree-covered mountainsides which in autumn are often ablaze with color. *Today breakfast and dinner will be included.*

Day 3: Sunday, September 30, 2012

Lincoln - North Conway - Lincoln

This morning you depart for a full day of sightseeing in the scenic White Mountains of New Hampshire. You will take the Kancamagus Highway, a Scenic Byway that winds along the Swift River, offering

brehtaking vistas and countless photo opportunities. This afternoon, arrive in North Conway. Enjoy time at leisure to stroll through the quaint village and visit the locally-owned shops and restaurants located there before returning to Lincoln. *Today breakfast will be included.*

Day 4: Monday, October 01, 2012

Lincoln - Townshend, Vermont - West Dover

A full day of scenic splendor awaits as you travel from the picturesque White Mountains of New Hampshire to the "Green Mountain State" - Vermont. Traditional white steeple churches and quaint villages dot the landscape. This afternoon, witness the elegance and beauty of the Friesian breed of horses when you attend a captivating Majestic Friesian performance at a working horse farm. *Today breakfast and dinner will be included.*

Day 5: Tuesday, October 02, 2012

West Dover - Weston - Manchester - West Dover

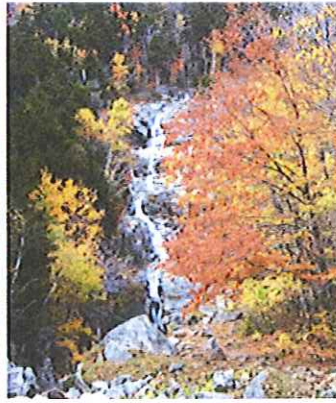
Enjoy the beauty of Vermont. This morning, visit the Vermont Country Store, "purveyors of the practical and hard-to-find." Browse the shelves for Vermont-made products including fudge, candies and cheeses. Next, visit Hildene, the Lincoln family home. This

stunning summer residence of Robert Todd Lincoln, Abraham Lincoln's eldest son, includes a historic home, gardens and farm set on 412 picturesque acres. **This afternoon, visit one of Vermont's picturesque working farms that has opened its doors to visitors from around the world. Enjoy a tractor-pulled tour of the grounds before heading inside the barn theater to learn about maple sugaring in Vermont. Today breakfast will be included.**

Day 6: Wednesday, October 03, 2012

West Dover - Bennington - Pittsfield, Massachusetts

Begin your day with a drive along the scenic Molly Stark Trail, where every turn brings a new breathtaking vista. Arrive in the town of Bennington and visit the gravesite of Robert Frost as well as the historic 306' stone obelisk known as the Bennington Battle Monument. Next, visit Bennington Museum's rich collection of Americana, including the largest public collection of work by local artist Grandma Moses. This afternoon, experience a tour of an apple



orchard before stopping at the bake shop for a tasty treat! Later, travel south through the rolling hills of the Berkshires in western Massachusetts. *Today breakfast will be included.*

Day 7: Thursday, October 04, 2012

Pittsfield - Stockbridge - Pittsfield

This morning, visit the Norman Rockwell Museum in Stockbridge which contains the world's largest collection of the famous illustrator's work. Explore the

many exhibits, including Rockwell's *Saturday Evening Post* covers and other recognizable works of art. This afternoon, visit the Hancock Shaker Village. Discover the roots of the Shaker community during a guided tour of the village. Visit the historic Brick Dwelling, Round Stone Barn and the Laundry/Machine Shop. Complete your Shaker experience with a traditional four-course Shaker supper, concluding with a

special music program. *Today breakfast and dinner will be included.*

Day 8: Friday, October 05, 2012

Pittsfield - Boston - Tour Ends

Return to the Boston airport for your flight home. The many pleasant memories of your New England Back Roads adventure will last a lifetime. *Today breakfast will be included.*

Experience It!

Adams Farm

Visit one of southern Vermont's picturesque working farms which has opened its doors to visitors from around the world. Adams Farm is a sixth generation working farm located in the pristine Mount Snow Valley. Enjoy a behind-the-scenes revolving farm experience while learning about maple syrup production, farm animals and local Vermont life.

Take a comfortable wagon ride through some of the farm's 210 acres. Learn first-hand what it takes for a family farm to survive as a local farmer tells you about their experiences with true Yankee humor. Be sure to visit the farm store which is filled with many wonderful Vermont products.

YOUR ITINERARY AT A GLANCE

Day	1	Doubletree Guest Suites, Cambridge, MA
Day	2, 3	Mountain Club on Loon, Lincoln, NH
Day	4, 5	Grand Summit Mount Snow, West Dover, VT
Day	6, 7	Crowne Plaza Pittsfield-Berkshires, Pittsfield, MA

On some dates alternate hotels may be used.

Fall Foliage Tours During the fall season, these tours offer the perfect opportunity for viewing spectacular fall foliage.

Please Note:

Air rate and schedule are applicable for groups of 10 or more traveling on the same flights and dates.

Due to tour scheduling, return flights should not be booked prior to 1:00 PM.

This tour requires average physical activity. You should be in good health, able to climb stairs and walk reasonable distances, possibly over uneven grounds and cobblestone streets.

For more information contact

Marci McCarrey • Suzi Davis Travel • (309) 834-3739 or (866) 592-0455

IMPORTANT RESERVATION INFORMATION

A Kenya Visa is required for this tour at your expense. This can be purchased upon arrival in Nairobi. One complete blank page is required in your passport to allow for visa on arrival. The approximate cost is \$25 USD. Visit www.travel.state.gov for the U.S. State Department for the latest details about passports and visa requirements.

IDENTIFICATION

Travel within USA

All airlines will ask for identification when you check-in. It is recommended that you carry a passport if you have one. A driver's license (with a photo I.D.) is also acceptable for domestic flights.

***Airline Charges: Airline Fuel Surcharges:** Our air inclusive vacations are priced including airline fuel surcharges valid at time of print. These fuel surcharges are assessed by the airlines and are subject to increase without notice. Government taxes and fees are additional.

Taxes and Fees: Government and Other Authority Taxes and Fees are not included in base fare but are included in the tax amount listed: September 11th Security Fee up to \$10.00, Passenger Facility Charge (PFCs) of up to \$18 per passenger, Federal Domestic Flight Segment Fee of up to \$3.50 USD applies per passenger, per segment, US or International Departure and Arrival Fees up to \$350 which vary by itinerary. In order to better serve you, once you complete the booking process your invoice will display your vacation land package, base airfare, fuel surcharge and all taxes and fees as separate line items. Airfares are subject to change. Seats are limited and may not be available on every flight or departure date.

Checked Baggage Charges: Some airlines may impose additional charges if you choose to check any baggage. Please contact your airline or refer to its website for detailed information regarding your airline's checked baggage policies, as fees vary by airline and destination.

Cancellation Charges for this tour: After your seat reduction date has passed, a non-refundable deposit will be retained. For Cancellation between 60-16 days prior to departure: cancellation fee of 30% of total price. For cancellation between 15-1 days prior to departure: cancellation fee of 50% of total price. For cancellation on the day of departure and after: 100% of total price. For Ocean Cruises: For cancellation between 90-61 days prior to departure: cancellation fee of 35% of total price. For cancellation between 60-31 days prior to departure: 60% of total price. 30 or fewer days prior to departure: 100% of total price. For River Cruises: including Europe, Russia, Egypt and China, 90-61 days prior to departure: cancellation fee of 50% of total price. For cancellation between 60-31 days prior to departure: cancellation fee of 85% of total price. For cancellation 30 or fewer days prior to departure: cancellation fee of 100% of total price. For Galapagos and Antarctica: A cancellation fee of 60% will apply for cancellation between 120-90 days prior to departure; A cancellation charge of 100% will apply for cancellation less than 90 days prior to departure. Cancellation protection is highly recommended and must be purchased at time of deposit. Air rates are subject to change until tour is paid in full. If waivers have not been purchased and a reservation is cancelled for any reason prior to departure - Air is 100% non-refundable once paid in full. Cancellation charges also apply to reservations made for "pre" and "post" night accommodations. Purchase of Waiver and Insurance guarantees a full refund of all payments (including deposit), except the Waiver and insurance fee itself, made to Collette Vacations for travel arrangements in case of cancellation of your travel plans for any reason prior to the day of departure. The Waiver and Insurance does not cover any single supplement charges which arise from an individual's Traveling companion electing to cancel for any reason prior to departure. Upon cancellation of transportation or travel services where you, the customer, are not at fault and have not canceled in violation of the terms and conditions above, you will

be refunded 100%. Please see your sales agent for more information, or review our brochure for details.

Consumer Protection Plans: Collette Travel Service holds membership in the following highly reputable industry organizations: the United States Tour Operators Association and the American Society of Travel Agents. Each association operates a consumer protection plan to cover deposits made by travelers. Full details are available from the organizations or Collette Travel Service. Collette is pleased to give this additional protection to our clients. Our California Sellers of Travel registration number is 2006766-20. Our State of Washington Unified Business Number is 601220855. Our Nevada Sellers of Travel registration number is 2003-0279.

Responsibilities: Neither Collette Travel Services, Inc., its affiliated entities and its and their employees, shareholders, officers, directors, successors, agents, and assigns (collectively "Collette"), own or operate any person or entity which is to or does provide goods or services for these trips. Because Collette does not maintain control or operate the personnel, equipment, or operations of the suppliers it uses and as such Collette assumes no responsibility for and cannot be held liable for any personal injury, death, property damage or other loss accident, delay, inconvenience, or irregularity which may be occasioned by reason of (1) any wrongful, negligent, willful or unauthorized acts or omissions on the part of any of the suppliers or other employees or agents; (2) any defect in or failure of any vehicle, equipment, or instrument owned, operated or otherwise used by any of these suppliers; or (3) any wrongful, willful or negligent act of or omission on the part of any other party not under the supervision and control of Collette. Additionally, Collette waives any and all liability for losses or expenses due to sickness, lack of appropriate medical facilities or practitioners, weather, strikes, theft or other criminal acts, war, terrorism, computer problems, acts of God, or other such causes. All services and accommodations are subject to the laws of the country in which they are provided. Collette reserves the right to make changes in the published itinerary whenever, in their sole judgment, conditions warrant, or if Collette deems it necessary for the comfort, convenience, or the safety of the tour. Collette reserves the right to withdraw any tour at any time. Collette reserves the right to decline to accept any person as a member of the tour, or to require any participant to withdraw from the tour at any time, when such action is determined by the tour manager to be in the best interests of the health, safety, and general welfare of the tour group or of the individual participant. Collette does not accept liability for any carrier's cancellation penalty incurred by the purchase of a non-refundable airline or other ticket to the tour departure city and return or otherwise. Baggage and personal effects are the sole responsibility of the passenger at all times. Passengers may be photographed for the promotional purposes of Collette. Payment of the deposit to Collette constitutes acceptance of these terms and conditions. Passenger agrees that any dispute concerning, relating, or referring to the contract, the brochure or any literature concerning my trip, or the trip itself, shall be resolved exclusively by binding arbitration according to the then existing rules of the American Arbitration Association in Rhode Island. Such proceedings will be governed by substantive Rhode Island law. The arbitrator and not any federal, state, or local court or agency shall have exclusive authority to resolve any dispute relating to the interpretation, applicability, enforceability, conscionability, or formation of this contract, including but not limited to any claim that all or any part of this contract is void or voidable. Explorations and Smithsonian Journeys Travel Adventures are brands of Collette Travel Services Inc., a Rhode Island based corporation.



Photos shown are reflective of the area(s) visited, but may not be included in the actual tour itinerary.