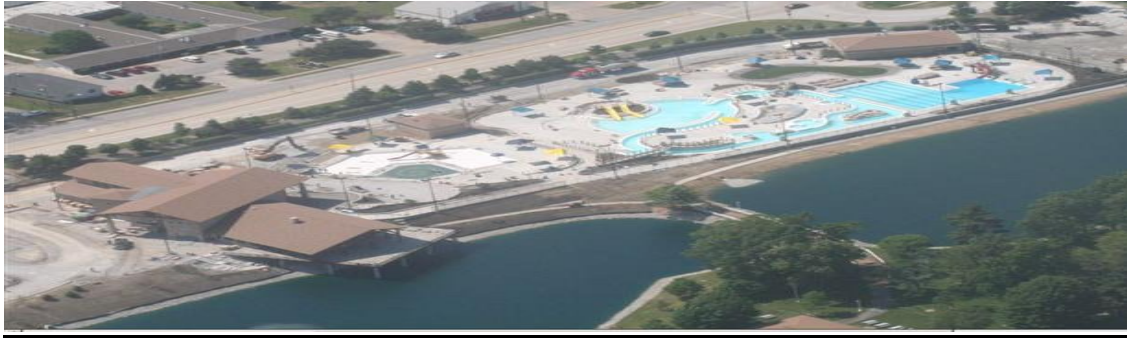


2010 Park Information:



Pool Hours

May 29 – August 22:

Tot Pool: 10 a.m. – 8 p.m. Daily

Adult Pool:

Weekdays: 6 a.m. - 9 a.m. Lap Swim

9 a.m. - Noon Day Camp

Noon - 8 p.m. Open Swim (Mon. – Tues.)

Noon - 9 p.m. Open Swim (Wed. – Fri.)

Weekends: 8 - 10 a.m. Lap Swim

10 a.m. - 9 p.m. Open Swim (Saturday)

10 a.m. - 8 p.m. Open Swim (Sunday)

Holiday Hours:

(Memorial Day: May 31, Independence Day: July 4, Labor Day: Sept. 6)

8 - 10 a.m. Lap Swim

10 a.m. - 8 p.m. Open Swim

August 23 – September 6

Tot Pool: 10 a.m. – 8 p.m. Daily

Adult Pool:

Weekdays:	6 - 9 a.m.	Lap Swim
	4 - 8 p.m.	Open Swim (Mon. – Tues.)
	4 - 9 p.m.	Open Swim (Wed. – Fri.)
Weekends:	8 - 10 a.m.	Lap Swim
	10 a.m. - 9 p.m.	Open Swim (Saturday)
	10 a.m. - 8 p.m.	Open Swim (Sunday)

Court Area

Spring and Fall Hours

April 3 – May 28 and September 7 – October 3

Weekdays: 4 p.m. – 9 p.m.

Weekends: 10 a.m. – 9 p.m.

Memorial Day Weekend (May 29) – Labor Day (September 6)

Daily: 8 a.m. – 9 p.m.

(Open until 10 p.m. on Friday and Saturday)

Miniature Golf Course

Spring and Fall Hours

April 3 – May 28 and September 7 – October 3

Weekdays: 4 p.m. – 9 p.m.

Weekends: 10 a.m. – 9 p.m.

Memorial Day Weekend (May 29) – Labor Day (September 6)

Daily: 10 a.m. – 9 p.m.

(Open until 10 p.m. on Friday and Saturday)

State Farm Park Guest Policy

- **Sunday – Thursday, before 4 p.m.:** Two guests per family or single employee (not per cardholder).
- **Friday – Saturday & Holidays, before 4 p.m.:** No guests are allowed (single employees may bring one guest at all times).
- **Daily, after 4 p.m.:** Two guests or one family unit are allowed per family or single employee (not per cardholder).

For more information on State Farm Park and park hours click [here](#) for a copy of the Park Brochure.